

# SMARTDITCH® REPLACES FAILED RIP RAP AT MDOT “PARK ‘N RIDE” LOCATION.

INSTANT IMPROVEMENT IN STORMWATER FLOW AND EROSION CONTROL REALIZED.



Failed non-reinforced concrete spillway.

## Problem

A non-reinforced concrete spillway and multiple rip rap applications failed after one year, causing flooding and erosion at a local Park ‘n Ride commuter location maintained by the MDOT Brighton Service Garage.

## Solution

A new reinforced concrete spillway and SmartDitch drainage channel was installed to replace the failed N-RCP and the continuously scouring rip rap.

70 LF of 24” trapezoidal SmartDitch was to replace the rip rap section of the spillway. It only took two days to install and eliminated a year-round drainage, maintenance, and aesthetic issue. No special equipment was required for installation and the product was delivered from Michigan’s SmartDitch Distributor, St. Regis Culvert, to the site in the back of a standard pick-up truck.

Since SmartDitch is a permanent solution, it is more cost-effective, requires little-to-no maintenance, and will not promote vegetated growth in its channels. Additional savings were achieved by re-purposing the existing rip rap at the downstream end of the SmartDitch channel.

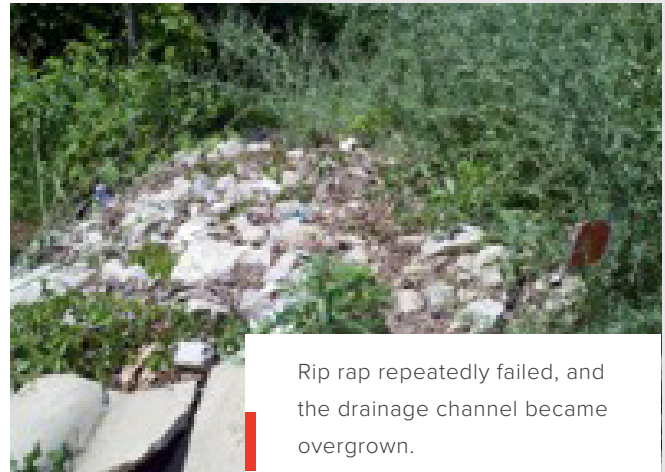


## RESULTS

Completed spill with SmartDitch and repurposed rip rap.

## Quick Facts

- ◆ **PRODUCT:** 24” Trapezoidal SmartDitch, (9 pcs. total)
- ◆ **LENGTH:** 70 LF
- ◆ **BEDDING AND BACKFILL:** Class II A Sand
- ◆ **CONSTRUCTION TIME:** 3 Days (includes ditch preparation and SmartDitch installation, backfilling)
- ◆ **INSTALLATION CONTRACTOR:** N/A In-House maintenance crew
- ◆ **DISTRIBUTOR:** St. Regis Culvert, Charlotte, MI



Rip rap repeatedly failed, and the drainage channel became overgrown.

SmartDitch is manufactured in the USA. It is a safe, economical, long-lasting, and environmentally sound irrigation channel lining solution. For more information on the SmartDitch and the MegaDitch HDPE Channel Lining Systems contact:



866.576.2783 SMARTDITCH.COM