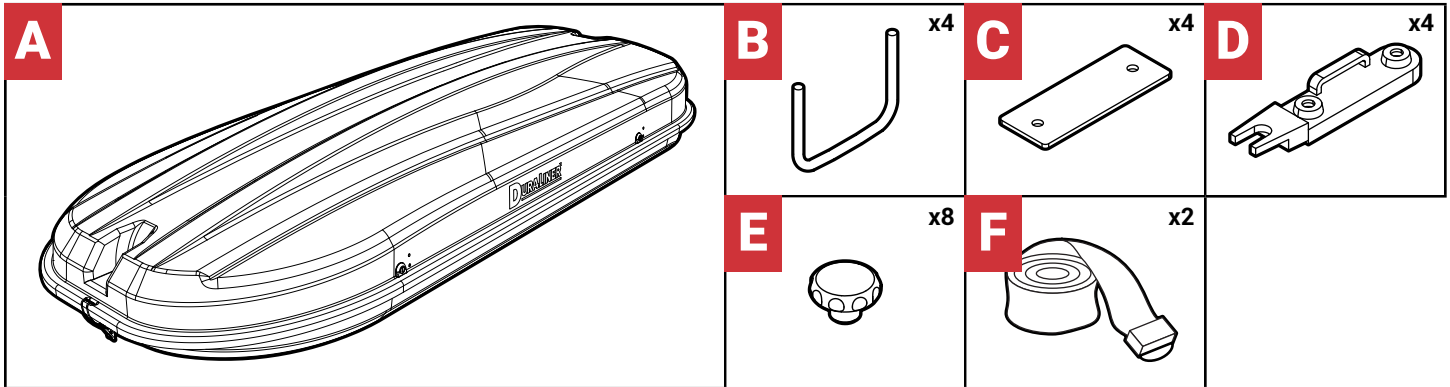


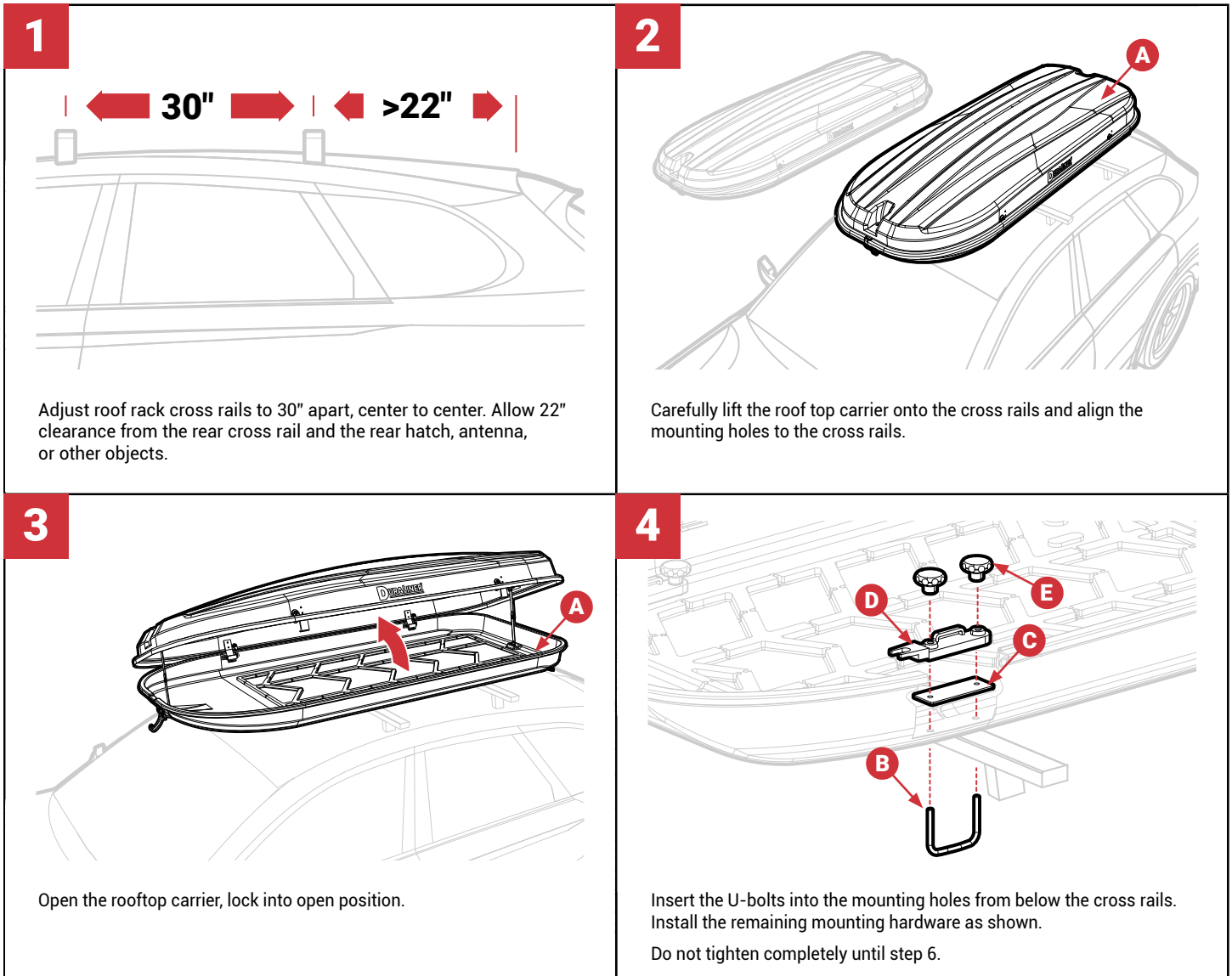
# DURALINER 16CF ROOF TOP CARRIER INSTALLATION INSTRUCTIONS

## KIT COMPONENTS:



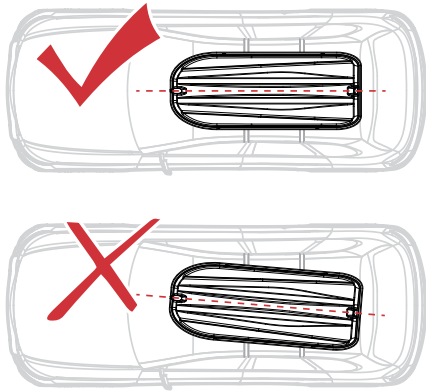
READ ENTIRE INSTALLATION INSTRUCTION SHEET BEFORE BEGINNING INSTALLATION.  
IMPROPER INSTALLATION MAY CAUSE DAMAGE OR INJURY.

## INSTRUCTIONS:

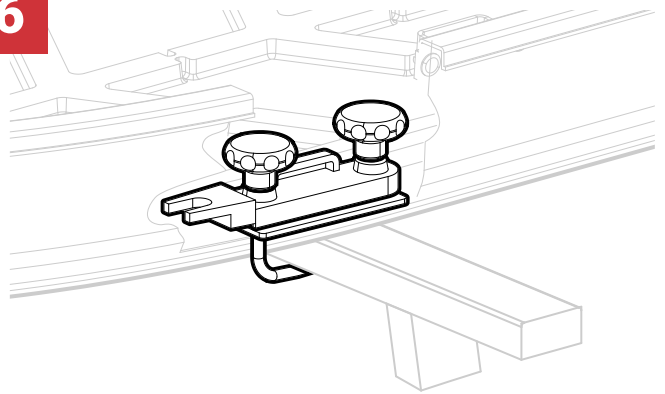


Manufactured by: PENDA CORPORATION • P.O. Box 449, 2344 W. Wisconsin St., Portage, WI 53901-0449  
(800) 356-7704 • (800) 362-7611 (In Wisconsin) • (Internet) [www.penda.com](http://www.penda.com)

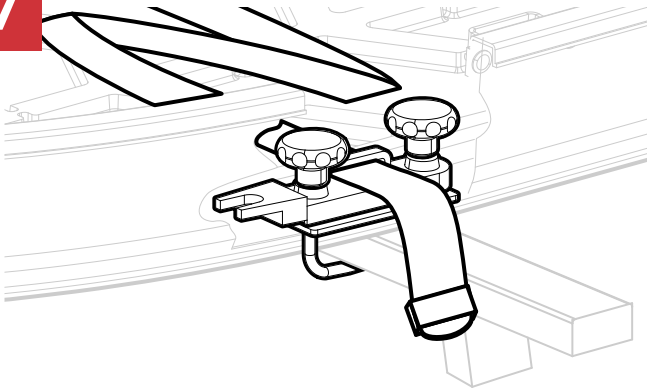
Rev 2 2024-01-26

**5**

Ensure the roof top carrier is centered on the cross rails.

**6**

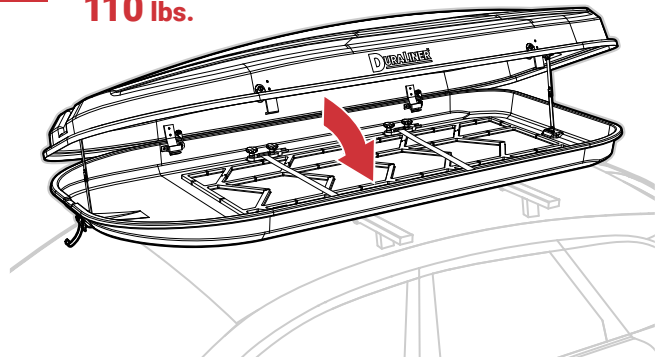
Ensure the roof top carrier is securely fastened to the cross rails.

**7**

Thread straps horizontally through loops.

**8**

**MAX  
110 lbs.**



Evenly distribute luggage and gear within the roof top carrier. Lower the lid. Insert keys into locks, rotate horizontal and remove keys. Fasten front and rear draw latch.

**WARNING:** The Duraliner Roof Top Carrier must be mounted securely to a roof rack with cross rails. Inspect mounting hardware periodically. Before each use, fasten the draw latch, and lock with keys.

### **SAFE TRAVELS - CHECKLIST FOR EVERY TRIP:**

- Ensure the draw latches on front and back of unit are fastened and the locks are engaged.
- Ensure the roof top carrier is securely fastened to the cross rails and the knobs are tightened.
- Evenly distribute luggage and gear.

Kruger Family Industries (KFI), the parent company of DuraLiner, warrants to the original purchaser only that products sold by KFI under the name DuraLiner are free from defects in material and workmanship, and against excessive wear under normal use for one (1) year from the date of purchase. KFI's obligation under this warranty is limited to the repair or replacement of covered products and only when the product has been returned, freight prepaid 2344 West Wisconsin Street Portage WI, 53901. KFI retains sole discretion in determining defective merchandise. There are no warranties which extend beyond the description on the face hereof.



**Manufactured by:** PENDA CORPORATION • P.O. Box 449, 2344 W. Wisconsin St., Portage, WI 53901-0449  
(800) 356-7704 • (800) 362-7611 (In Wisconsin) • (Internet) [www.penda.com](http://www.penda.com)

Rev 2 2024-01-26