

**DURALINER ROOFTOP CARGO BOX 20 ft<sup>3</sup>**

# DESIGNED FOR ADVENTURE

CONQUER YOUR CARGO



## FEATURES

### ROOFTOP CARGO BOX 20 ft<sup>3</sup>

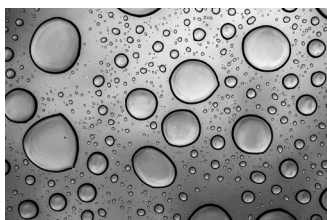
DuraLiner Rooftop Cargo Boxes are easily installed and work on most vehicles with a roof rack. With a no-tool assembly and simple U-bolt securing feature you will be ready to hit the road in minutes.

- Easy install with universal bolts
- Lightweight and durable to fit on most vehicle roofs
- Metal stays with magnetic holders ensures the lid stays up when loading
- Watertight and lockable to ensure your belongings are safe and secure
- Durable and recyclable UV-protected material that will retain its deep, rich finish throughout its life



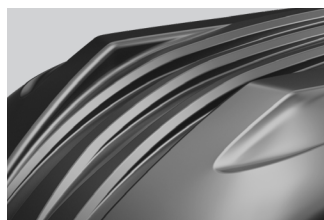
#### LARGE CAPACITY

With over 20 cubic feet of storage there is plenty of space to fit all of your gear.



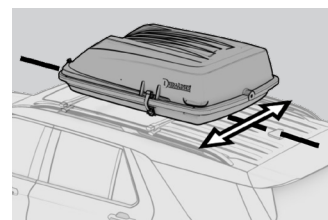
#### WATERTIGHT

Tight latching edges and thoughtful design create a water-tight seal to safeguard your belongings.



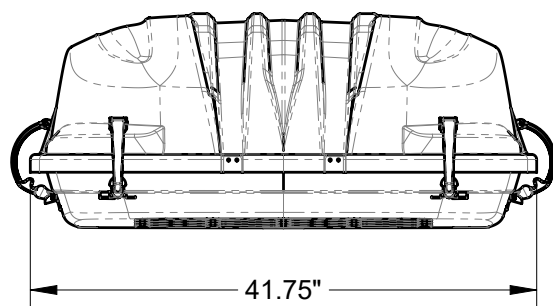
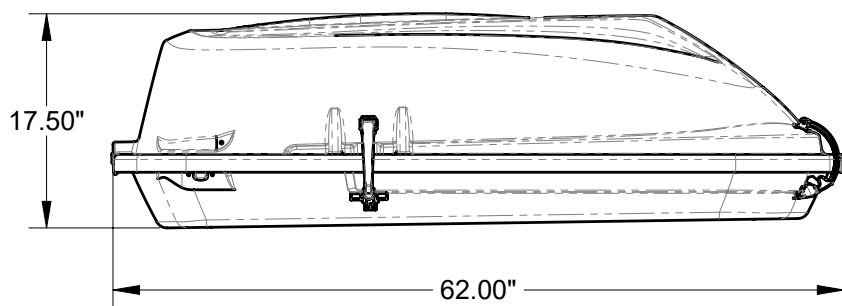
#### DURABLE

Heavy-duty plastic resists UV damage and maintains a rich finish to protect your belongings from weather.



#### EASY INSTALLATION

Simple attachment and heavy-duty U-bolts make installation quick and easy on any vehicle rack.



| Model  | Width  | Length | Height | Weight |
|--|--------|--------|--------|--------|
| Duraliner Rooftop Cargo Box 20 ft <sup>3</sup> | 41.75" | 62"    | 17.50" | 57 lbs |



## ROOFTOP CARGO BOX

# APPLICATION GUIDE



Find your storage solution here. Follow the link on the left to learn more about Duraliner Rooftop Cargo Boxes and view installation information.  
[penda.com/duraliner-cargomanagement](https://penda.com/duraliner-cargomanagement)



Kruger Family Industries (KFI), the parent company of DuraLiner, warrants to the original purchaser only that products sold by KFI under the name DuraLiner are free from defects in material and workmanship, and against excessive wear under normal use for one (1) year from the date of purchase. KFI's obligation under this warranty is limited to the repair or replacement of covered products and only when the product has been returned, freight prepaid 2344 West Wisconsin Street Portage WI, 53901. KFI retains sole discretion in determining defective merchandise. There are no warranties which extend beyond the description on the face hereof.

