

FORD TRANSIT WALL PANELS (2015+)

148" EXTENDED LENGTH WHEEL BASE HIGH ROOF

INSTALLATION INSTRUCTIONS

RECOMMENDED TOOLS

Knife or scissors Power drill with 9mm drill bit (optional)

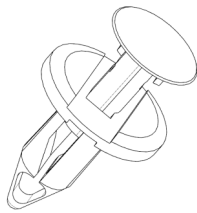
BEFORE BEGINNING THE INSTALLATION

1. Refer to the table on **Page 2** and check to make sure all of the listed items were provided in the box.
2. Gather the recommended tools listed above.

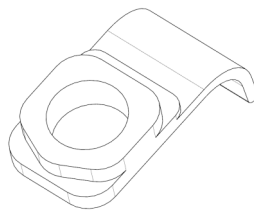
NOTES:

- Install wall panels where textured side is visible.
- Install panels within temperature range of 60°- 80°F.
- If wall panels conflict with other van accessories, some modifications may be necessary.
- When assembling with VanGuard floor panels or wheel well covers, the wall panels should be installed last over the floor panels and wheel well covers.

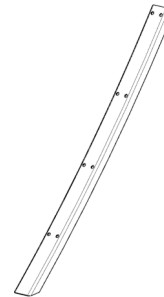
COMPONENTS PROVIDED IN KIT



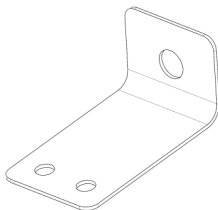
380442—Trim Pin 8mm



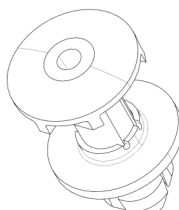
630159—Hanger



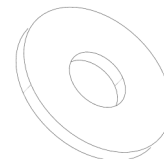
FVT046—Support Bracket



570467—L-Bracket



380411—Trim Pin 10.5mm



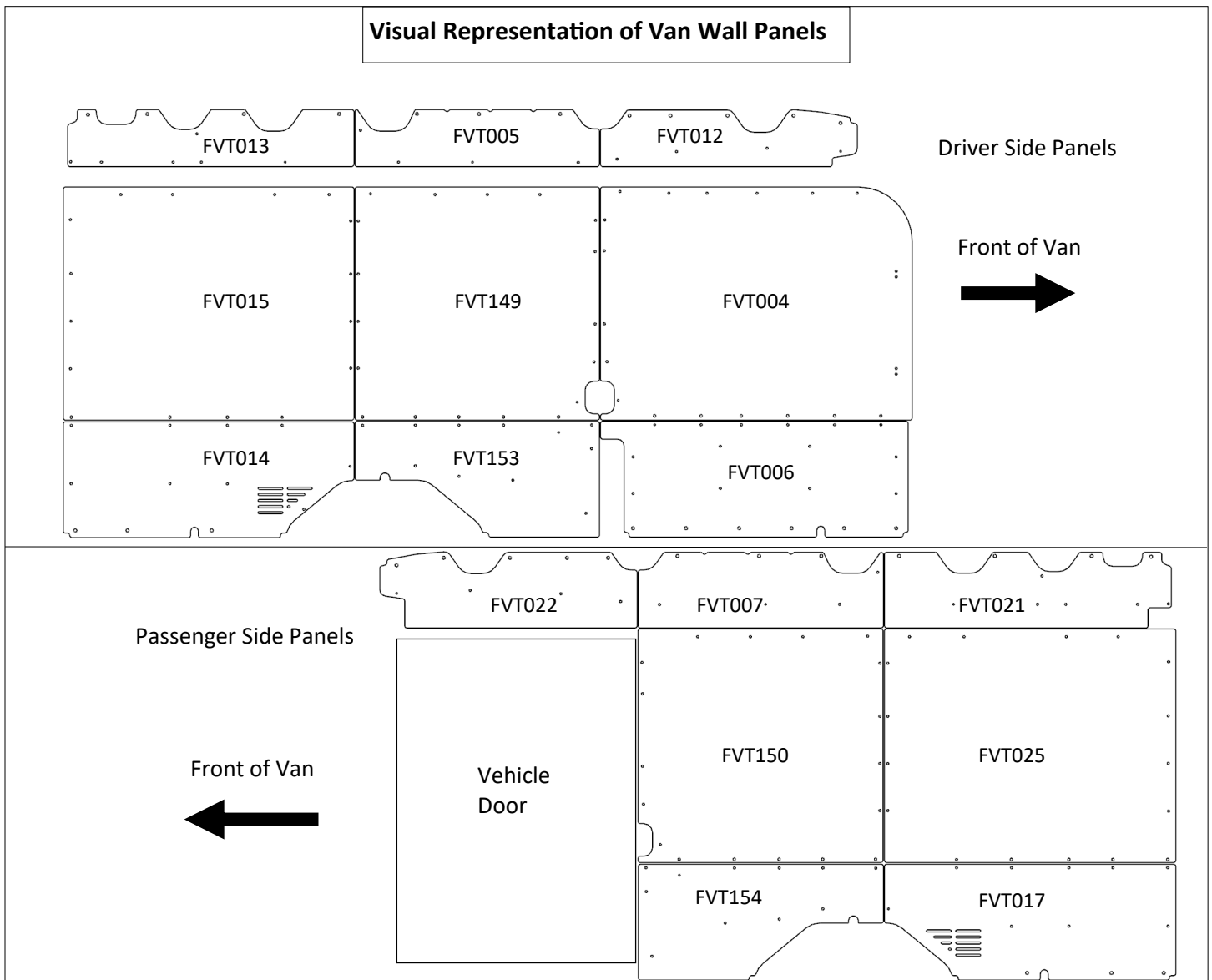
630165—Washer

BILL OF MATERIALS

FVT144A-148" Wheelbase High Roof		
Part #	Description	QTY
FVT004	Upper Front Driver Side	1
FVT005	Upper Middle Driver Side	1
FVT006	Lower Front Driver Side	1
FVT007	Upper Middle Passenger Side	1
FVT012	Upper Front Driver Side	1
FVT013	Upper Rear Driver Side	1
FVT014	Lower Rear Driver Side	1
FVT015	Middle Rear Driver Side	1
FVT017	Lower Rear Passenger Side	1
FVT021	Upper Rear Passenger Side	1
FVT022	Upper Front Passenger Side	1
FVT025	Middle Rear Passenger Side	1
FVT149	Middle Driver Side	1
FVT150	Middle Passenger Side	1
FVT153	Lower Middle Driver Side	1
FVT154	Lower Middle Passenger Side	1
FVT046	Support Bracket	2
PA01280	Hardware Kit	1

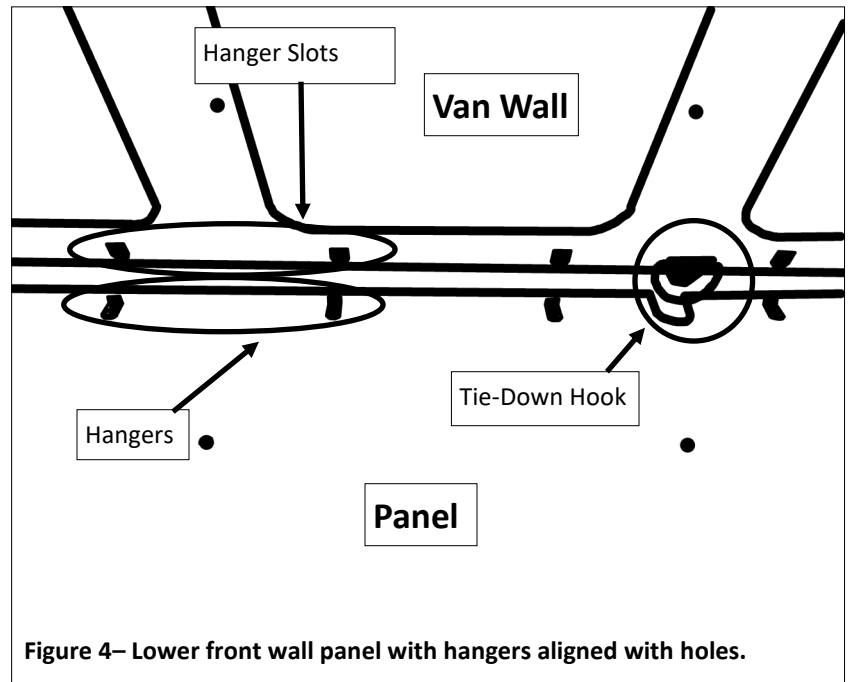
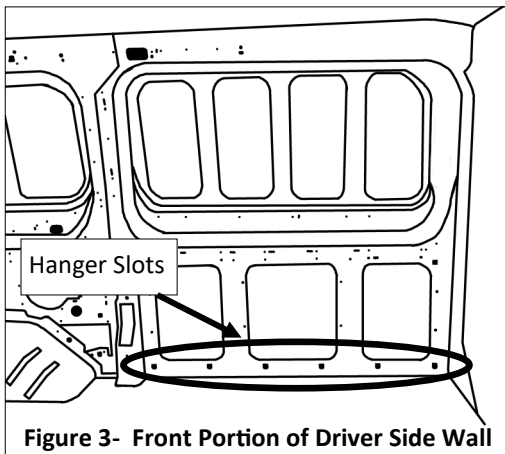
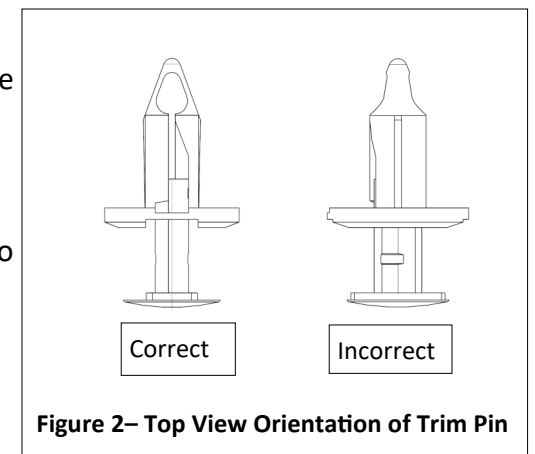
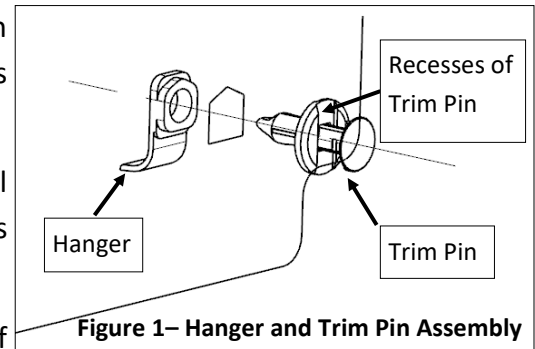
PA01280 - Hardware Kit		
Part #	Description	QTY
380442	Trim Pin 8mm	210
630159	Hanger	36
570467	L-Bracket	2
380411	Trim Pin 10.5mm	2
630165	Washer	2

Visual Representation of Van Wall Panels



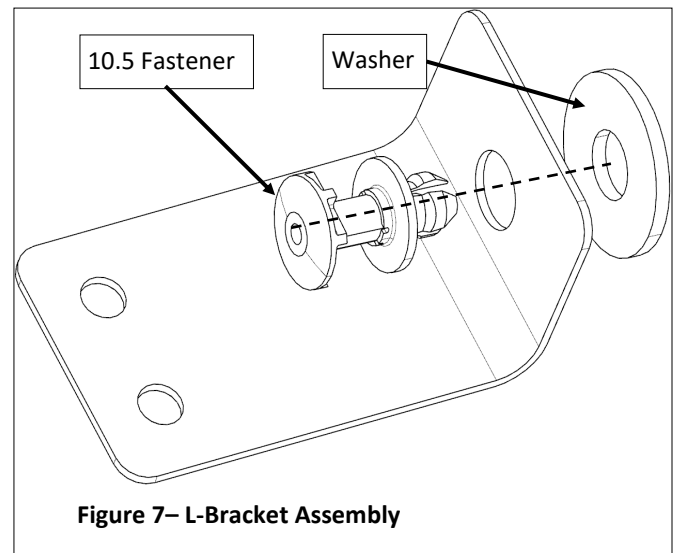
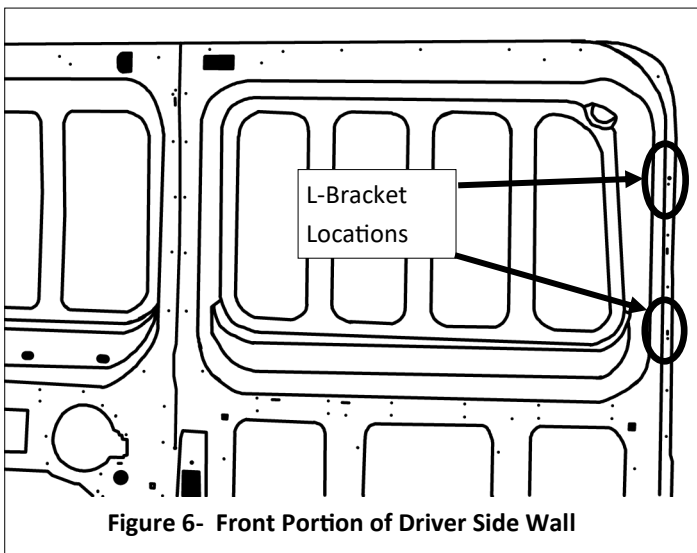
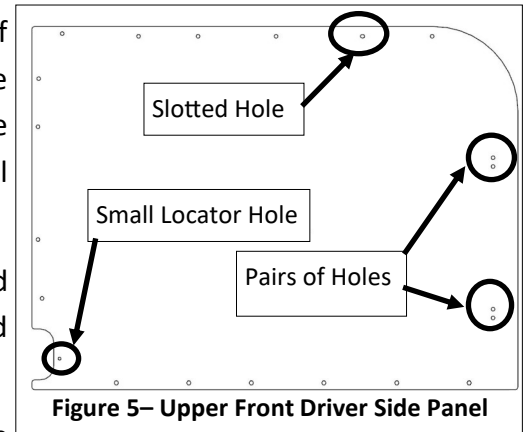
INSTRUCTIONS FOR INSTALLATION OF PANEL FVT006

1. Fasten hangers on the bottom six (6) hanger slots to the smooth side of panel FVT006 using trim pins (Figure 1). Follow directions in Figure 1 for orientation of trim pins.
2. Position panel FVT006 into lower front portion of driver side wall and slide panel over tie-down hook, angled towards you (Figures 3 and 4).
3. Align hangers with the bottom six slots of van wall and rest shelf of the hangers on bottom edge of slots.
4. Push panel to a vertical position against the wall, keeping pressure on the hangers to keep them in slots.
5. Push panel downward so the hangers engage the sheet metal.
6. Insert trim pins into remaining panel holes starting with the two holes in the top left corner of the panel.



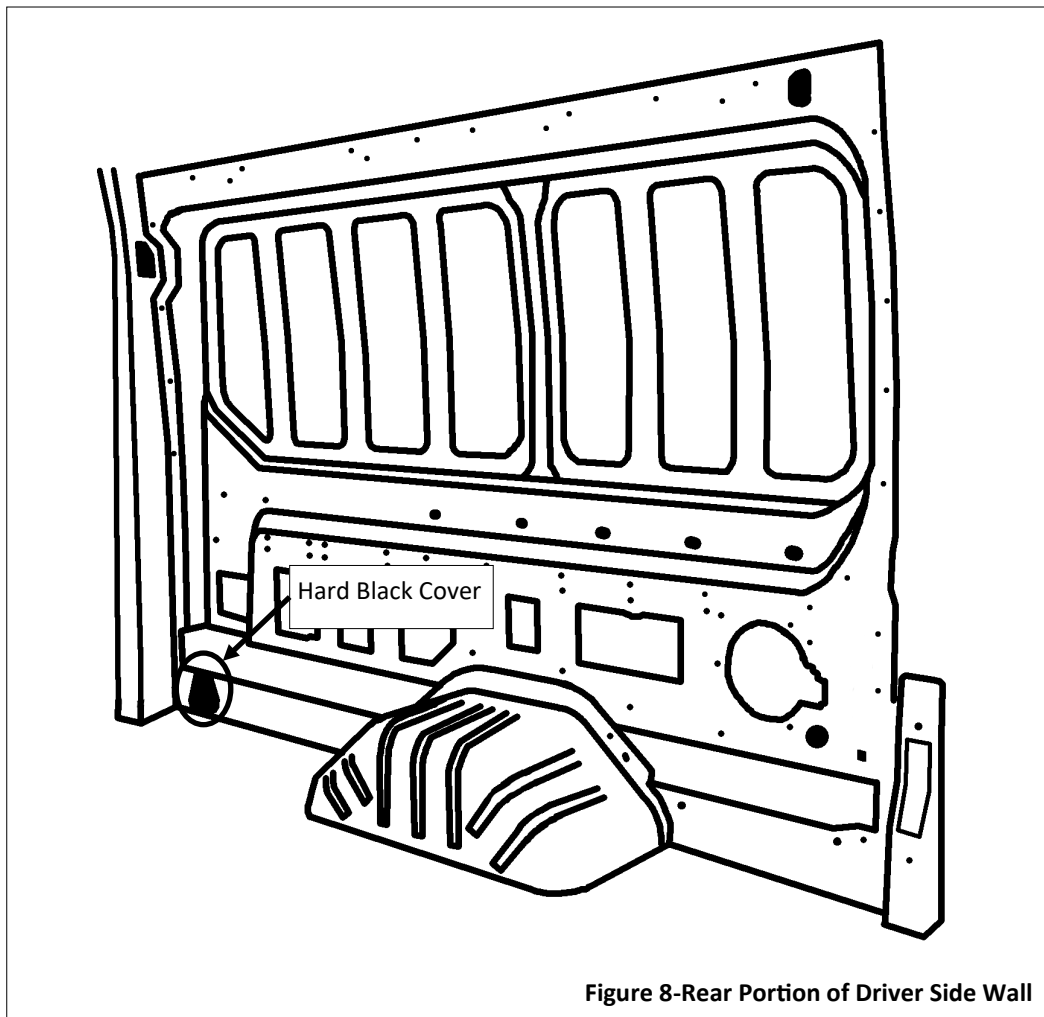
INSTRUCTIONS FOR INSTALLATION OF PANEL FVT004

1. Attach the L-brackets to the panel by aligning the two smaller holes on the L-brackets with the pair of holes on the right side of the panel and using the trim pins to fasten them together (Figure 5). The L-brackets should be attached to the smooth face of the panel with the bends wrapping around the edge of the panel toward the textured face of the panel.
2. Position panel into middle front portion of driver side wall and push trim pins into the small locator hole on the bottom left and the slotted hole on the top right (Figure 5).
3. Line up the big hole on L-bracket with the smaller hole on the front edge of the van wall (Figure 6). Push the 10.5mm fastener through the L-bracket, washer, then van hole (Figure 7).
4. Push trim pins into the remaining holes.



INSTRUCTIONS FOR INSTALLATION OF LOWER WALL PANELS

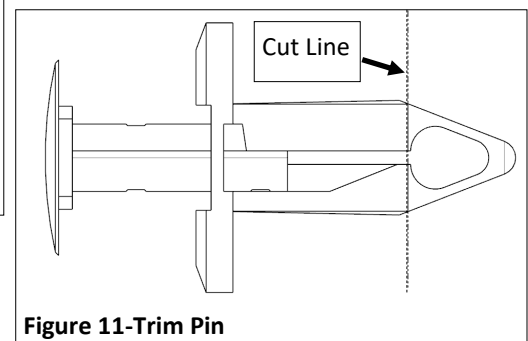
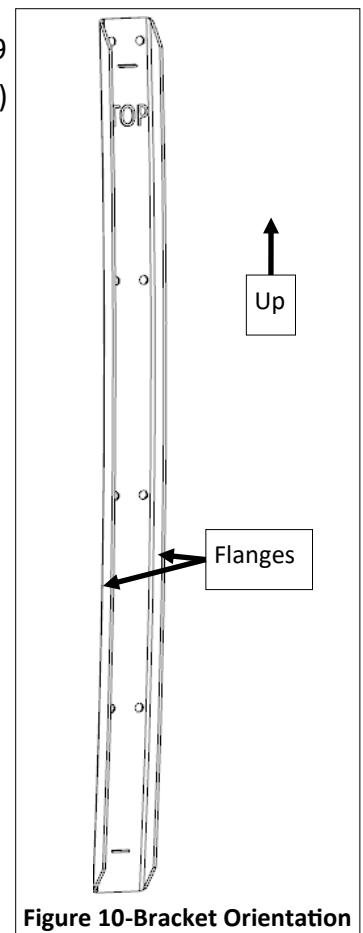
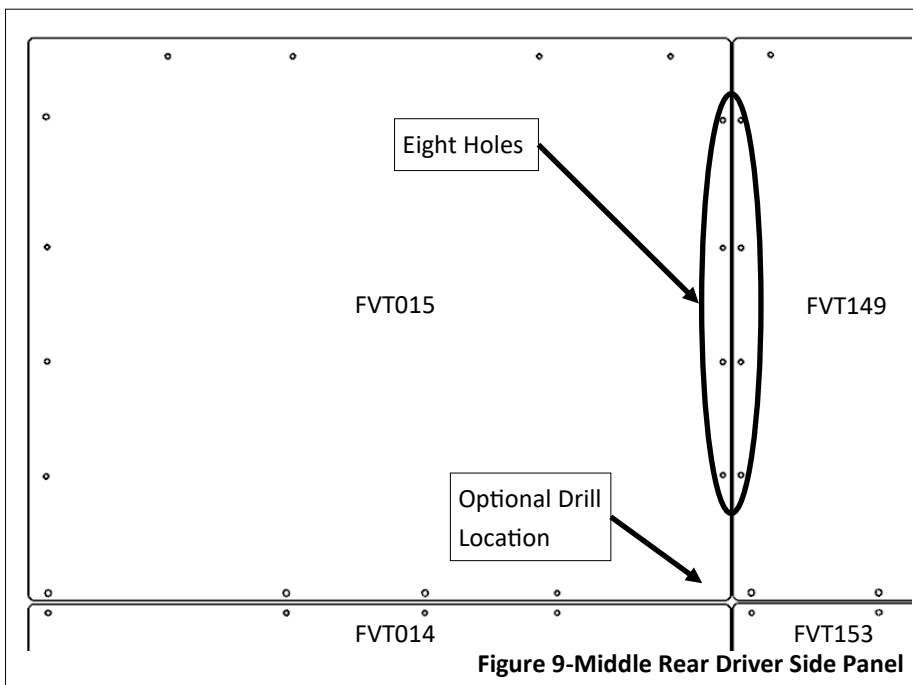
1. Position panel FVT153 into lower portion in front of the wheel well and push trim pins into the panel holes starting with the top front most hole. Repeat for panel FVT154.
2. Remove hard black plastic cover from the bottom rear corner of the driver and passenger side, see Figure 8. The plug will not be replaced after the panel is installed.
3. Fasten hangers on the bottom three (3) hanger slots to panel FVT014. Reference page 3 to install hangers to the wall panel then to van.
4. Position panel FVT014 rear of the wheel well and insert trim pins into panel holes starting with the top front most hole.
5. Repeat steps 2-4 for panel FVT017.



INSTRUCTIONS FOR INSTALLATION OF MIDDLE WALL PANELS

1. Align the eight holes on the support bracket with the four holes on the front edge of panel FVT015 and the rear edge of panel FVT149 (Figure 9). Bracket needs to be on the smooth side of panels, in vertical orientation shown in Figure 10, and flanges bending away from panels. Attach support bracket with trim pins.
2. Position panel FVT015 and FVT149 in middle portion of van and push trim pins into panel holes starting with the bottom front hole. Review page 2 or locations in van. **Note:** The trim pin for the bottom front hole for panel FVT149 may not push all the way in. If the trim pin does not push all the way in, cut the cone of the trim pin (Figure 11). Do not cut past the cone.
3. Repeat steps 1 and 2 for panels FVT025 and FVT150, installing the support bracket using the four holes on the front edge of the FVT025 and rear edge of FVT150.

Optional: If panels FVT015 and FVT025 flare in the front bottom corner drill a 9 mm hole, 15 mm from the front and bottom edge of the panel (Figure 9) through the wall panel and van sheet metal.



INSTRUCTIONS FOR INSTALLATION OF UPPER WALL PANELS

1. Fasten hangers on the top hanger slots to the smooth side of panel FVT021 using the trim pin (Figure 1). Follow directions in Figure 1 for orientation of trim pins.
2. Position panel in van as shown on page 2, align hangers with the slots of van wall, and rest shelf of the hangers on bottom edge of slots.
3. Press top of panel toward van wall and push panel downward to engage hangers in the slots.
4. Insert trim pins into panel holes starting with the small locator hole indicated in Figure 12.
5. Repeat steps 1-4 for panels FVT005, FVT007, FVT012, FVT013, and FVT022.

