

FORD TRANSIT VAN PANELS (2015+)

148" WHEEL BASE HIGH ROOF

INSTALLATION INSTRUCTIONS

RECOMMENDED TOOLS

Phillips #4 screwdriver

Knife or scissors (optional)

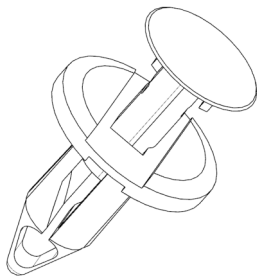
BEFORE BEGINNING THE INSTALLATION

1. Refer to the appropriate table on **Page 2** and check to make sure all of the listed items were provided in the box.
2. Gather the recommended tools listed above.

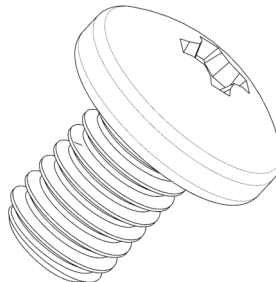
NOTES:

- Install WALL panels where textured side is visible.
- Install panels at room temperature (60°F-80°F).
- If wall panels conflict with other van accessories, some modifications may be required.
- When assembling with VanGuard floor panels and wheel well covers, the floor panels should be installed first, followed by the wheel well covers over the floor panels, then the wall panels over the floor panels and wheel well covers.

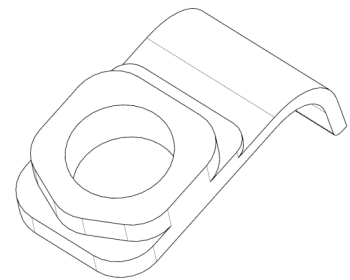
FASTENERS PROVIDED IN KIT



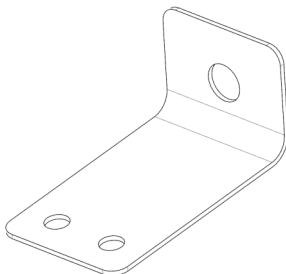
380442—TRIM PIN, GRAY, 8MM



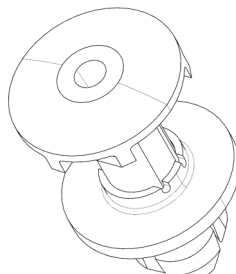
570466—M8X12 SCREW



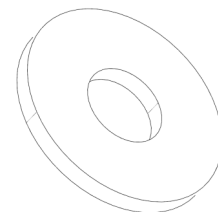
630159—HANGER



570467—L-BRACKET



380411—FASTENER 10.5MM



630165—WASHER

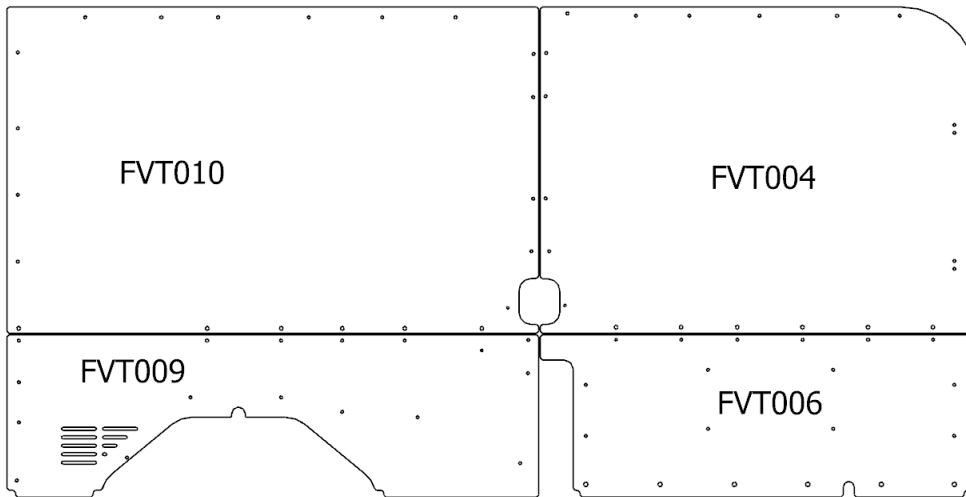
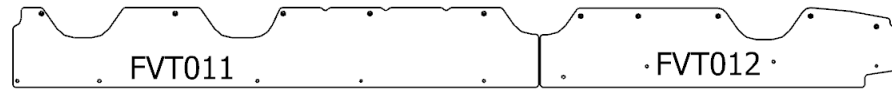
BILL OF MATERIALS FOR FORD TRANSIT VAN PANEL KITS

FVT144A - 148" Wheelbase High Roof		
Part #	Description	QTY
FVT004	MR/HR/EL Upper Front DS 130/148WB	1
FVT006	LR/MR/HR/EL Lower Front DS 130/148WB	1
FVT009	LR/MR/HR/EL Lower Rear DS 148WB	1
FVT010	MR/HR Upper Rear DS 148WB	1
FVT011	HR/EL Upper Rear DS 148WB	1
FVT012	HR/EL Upper Front DS 148WB	1
FVT016	MR/HR Upper Rear PS 148WB	1
FVT018	LR/MR/HR/EL Lower Rear PS 148WB	1
FVT022	HR/EL Upper Front PS 148WB	1
FVT023	HR/EL Upper Rear PS 148WB	1
PA01323	Hardware Kit	1

PA01323 - Hardware Kit		
Part #	Description	QTY
380442	Trim Pin, Gray, 8mm	170
630159	Hanger	26
570466	M8X12 Screw	2
570467	L-Bracket	2
380411	Fastener 10.5mm	2
630165	Washer	2

Visual Representation of Van Wall Panels

NOTE: Images shown are to provide the general shape of the panels.



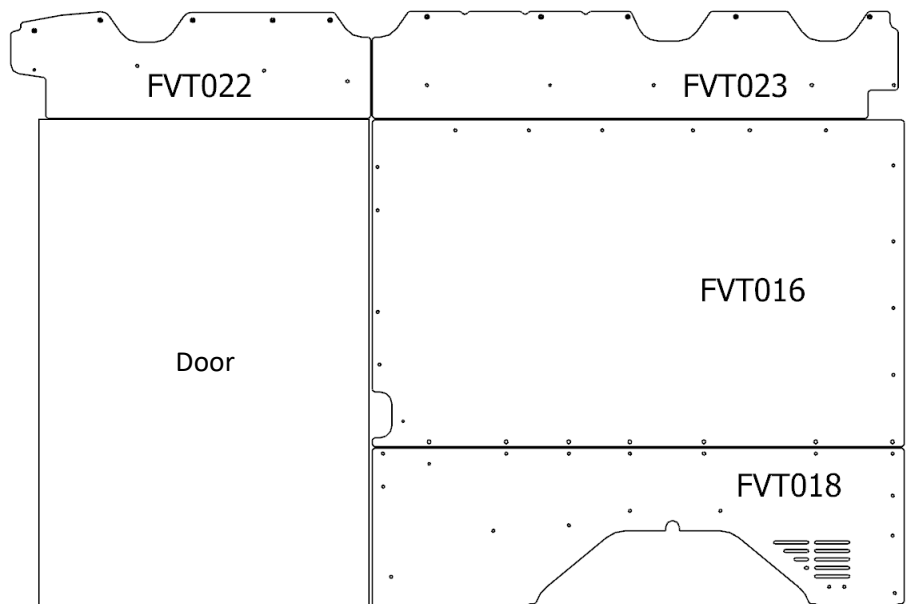
Driver Side Panels

Front of Van



Passenger Side Panels

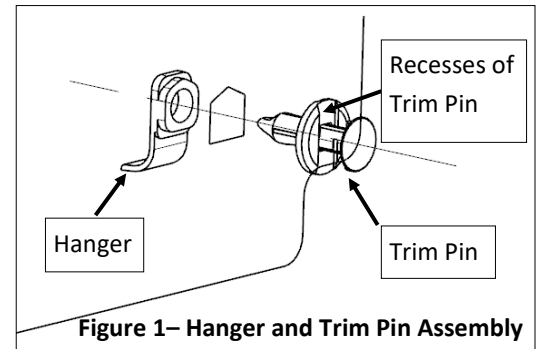
Front of Van



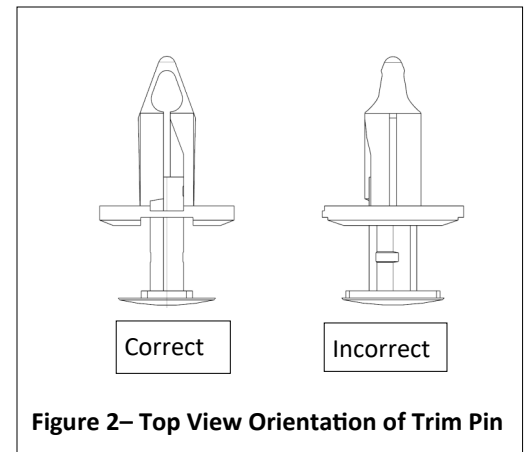
INSTRUCTIONS FOR INSTALLATION OF LOWER FRONT WALL PANEL

1. Install lower front wall panel-FVT006

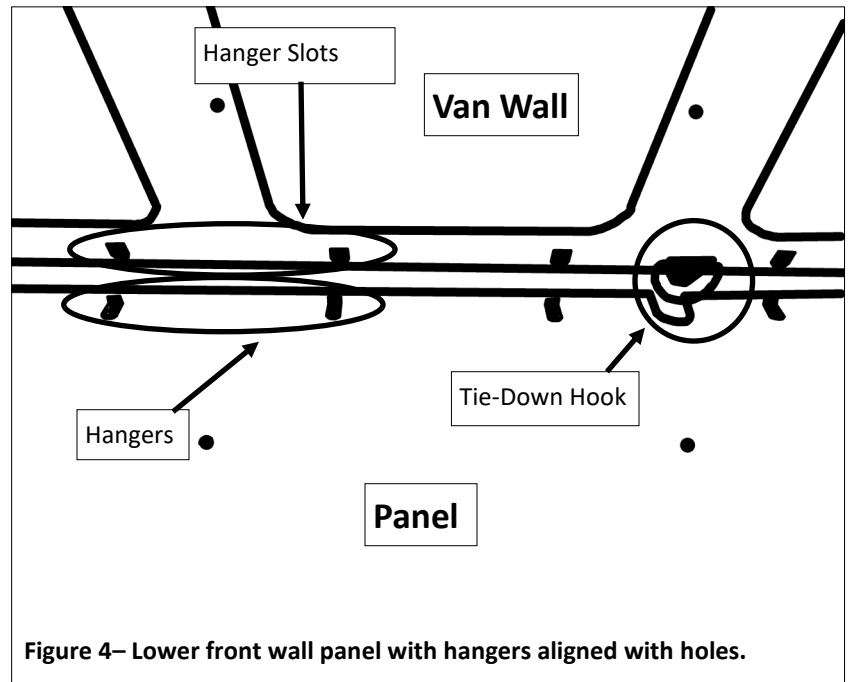
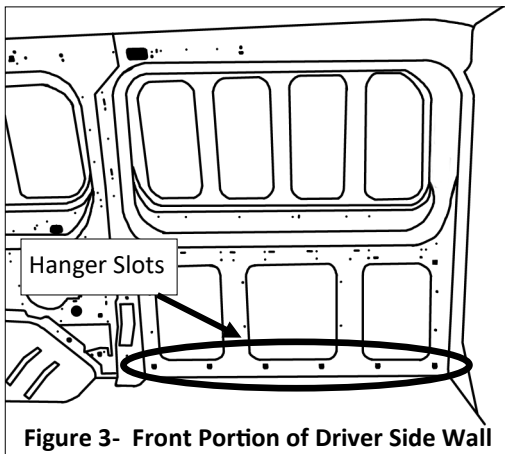
- a. Fasten hangers on the bottom six (6) hanger slots to the smooth side of the panel using the trim pin. **Note:** Put recesses of trim pin in vertical position and tabs of pin in horizontal position. Other orientations may make the panel more difficult to install. Proper orientation shown in Figure 1 and 2.



- b. Position panel into lower front portion of driver side wall (Figures 3 and 4).
 - i. Slide panel over tie-down hook, angled towards you.
 - ii. Align hangers with the bottom six slots of van wall and rest shelf of the hangers on bottom edge of slots.
 - iii. Push panel to a vertical position against the wall.
 - iv. Press bottom of panel toward van wall so that the hangers engage the slots.
 - v. Push panel downward so the hangers hook onto the sheet metal.



- c. Insert trim pins into panel holes starting with the two holes in the top left corner of the panel.



INSTRUCTIONS FOR INSTALLATION OF MIDDLE FRONT WALL PANEL

2. Install middle front wall panel-FVT004

a. Attach the L-brackets to the panel.

- i. Align the two holes on the L-brackets with the pair of holes on the right side of the panel (Figure 5). Make sure that the L-brackets are on the smooth side of the panel and the ends point to inside the van.
- ii. Use the trim pins to fasten the L-brackets into place.

b. Position panel into middle front portion of driver side wall.

- i. Push trim pins into the bottom left hole and the slotted hole on the top right (Figure 6).
- ii. Line up the big holes on the L-bracket with the smaller holes on the front edge of the van wall (Figure 6). Push the 10.5mm fastener through the washer and the L-bracket to hole then into place (Figure 7).
- iii. Push trim pins into the remaining holes.

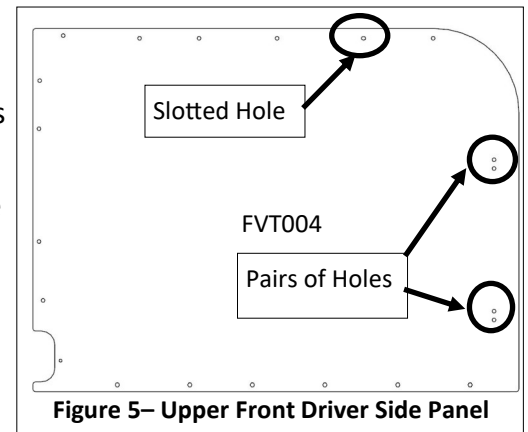


Figure 5– Upper Front Driver Side Panel

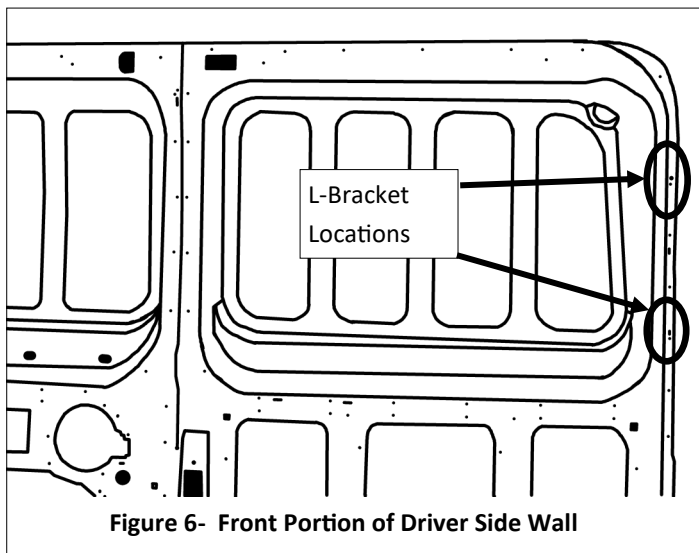


Figure 6- Front Portion of Driver Side Wall

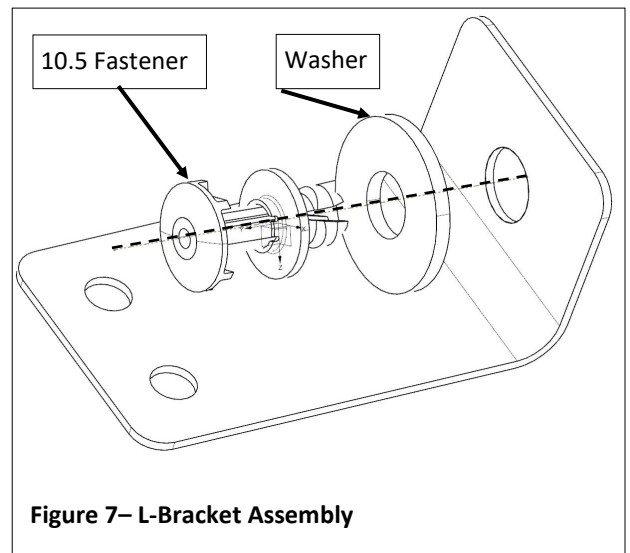
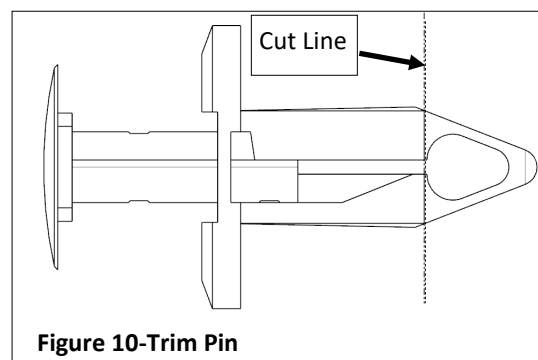
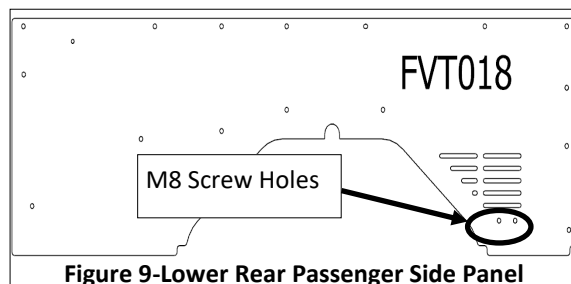
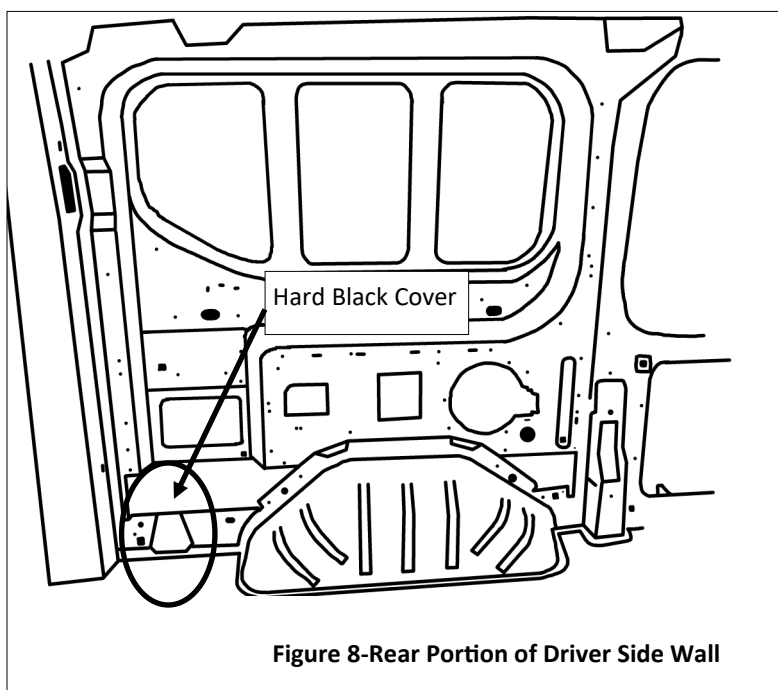


Figure 7– L-Bracket Assembly

INSTRUCTIONS FOR INSTALLATION OF REAR WALL PANELS

1. Install lower rear panel on the driver side-FVT009
 - a. Remove hard black plastic cover from the bottom left corner. The plug will not be replaced after the panel is installed, see Figure 8.
 - b. Position panel into lower rear portion on the driver side wall and push trim pins into the panel holes starting with the top right most hole.
2. Install lower rear panel on the passenger side-FVT018
 - a. Remove hard black plastic cover from the bottom right corner. The plug will not be replaced after the panel is installed.
 - b. Position panel into lower rear portion on the passenger side wall and push trim pin into the top left most hole.
 - c. Screw M8 screws in the two (2) holes below the grated opening on the panel (Figure 9).
 - d. Push trim pins into the remaining holes.
3. Install middle rear panels-FVT010 and FVT016
 - a. Position panel FVT016 into middle rear portion on the driver side wall and push trim pins into panel holes starting with the bottom hole closest to the front of the van.
 - b. Repeat for the middle rear panel FVT010 on the passenger side. **Note:** The trim pin for the bottom right hole for panel FVT010 may not push all the way in. If so, cut the cone of the trim pin. Do not cut past the cone (Figure 10).



INSTRUCTIONS FOR INSTALLATION OF UPPER WALL PANELS

1. Install upper wall panels-FVT011,FV012, FVT022, and FVT023
 - a. Fasten hangers on the top five (5) hanger slots to the smooth side of the panel using the trim pin.
Note: Put recesses of trim pin in vertical position and tabs of pin in horizontal position. Other orientations may make the panel more difficult to install. Proper orientation shown in Figure 1 and 2.
 - b. Position panel FVT022 into upper front portion of passenger side wall, above side door.
 - ii. Align hangers with the top five slots of van wall and rest shelf of the hangers on bottom edge of slots.
 - iii. Push panel to a vertical position against the wall.
 - iv. Press top of panel toward van wall so that the hangers engage the slots.
 - v. Push panel downward so the hangers hook onto the sheet metal.
 - c. Insert trim pins into panel holes starting with the small locator hole in the panel (Figure 11).
 - d. Repeat process for panels FVT011, FVT012, and FVT023.

