

FORD TRANSIT VAN PANELS (2015+)

130"/148" WHEEL BASE MEDIUM ROOF

INSTALLATION INSTRUCTIONS

RECOMMENDED TOOLS

-Phillips #4 screwdriver -Phillips #3 screwdriver -Knife or scissors (optional)

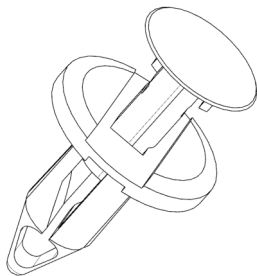
BEFORE BEGINNING THE INSTALLATION

1. Refer to the appropriate table on **Page 2** and check to make sure all of the listed items were provided in the box. **NOTE:** The label on the outside of the box will correspond with one of the table headings.
2. Gather the recommended tools listed above.

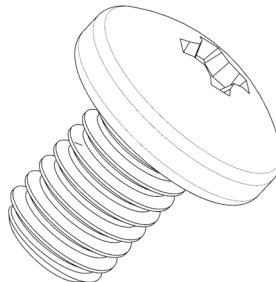
NOTES:

- Install the plastic panels so that the textured side is visible.
- If conflicts exist with other accessories, some modifications may be required.
- When assembling with a Penda Van Guard Floor and Interior Wheel Well Covers, the floors should be installed first, followed by the wheel well covers, and then the walls over the floors and wheel wells. If the walls are already installed, the lower wall panels must be removed in order to install the floor and wheel well covers.

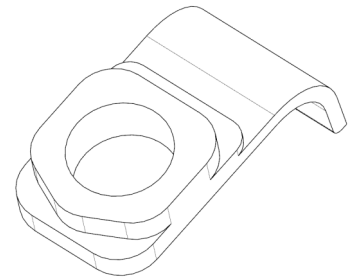
FASTENERS PROVIDED IN KIT



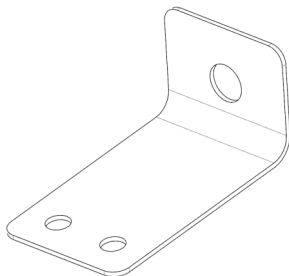
380442—TRIM PIN, GRAY, 8MM



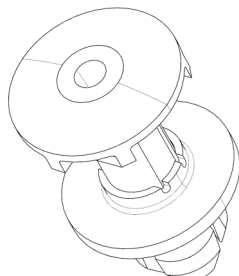
570466—M8X12 SCREW



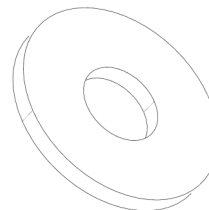
630159—HANGER



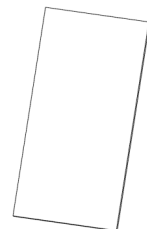
570467—L-BRACKET



380411—FASTENER 10.5MM



630165—WASHER



660162—ADHESIVE

BILL OF MATERIALS FOR FORD TRANSIT VAN PANEL KITS

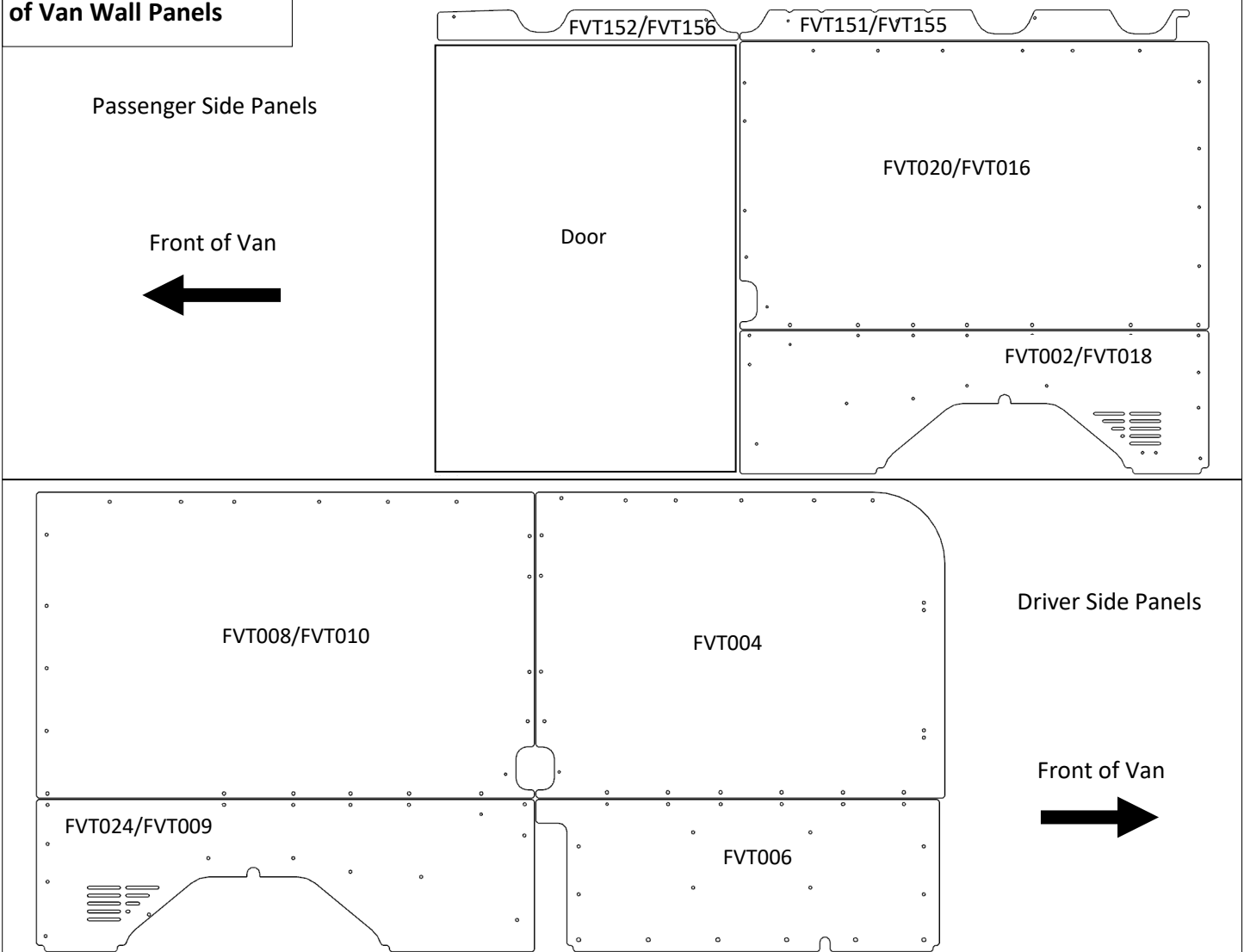
FVT141A-130" Wheelbase Medium Roof		
FVT002	LR/MR Lower Rear PS 130WB	1
FVT004	MR/HR/EL Upper Front DS 130/148WB	1
FVT006	LR/MR/HR/EL Lower Front DS 130/148WB	1
FVT008	MR Upper Rear DS 130WB	1
FVT020	MR Upper Rear PS 130WB	1
FVT024	LR/MR Lower Rear DS 130WB	1
FVT151	MR Upper Rear PS 130WB	1
FVT152	MR Upper Front PS 130WB	1
PA01322	Hardware Kit	1

PA01322 - Hardware Kit		
380442	Trim Pin, GRAY, 8MM	137
630159	Hanger	6
570466	M8X12 Screw	2
570467	L-Bracket	2
380411	Fastener 10.5mm	2
630165	Washer	2
660162	Double Stick Tape	5
PA0619	Adhesive Packet	1

FVT143A-148" Wheelbase Medium Roof		
FVT004	MR/HR/EL Upper Front DS 130/148WB	1
FVT006	LR/MR/HR/EL Lower Front DS 130/148WB	1
FVT009	LR/MR/HR/EL Lower Rear DS 148WB	1
FVT010	MR/HR Upper Rear DS 148WB	1
FVT016	MR/HR Upper Rear PS 148WB	1
FVT018	LR/MR/HR/EL Lower Rear PS 148WB	1
FVT155	MR Upper Rear PS 148WB	1
FVT156	MR Upper Front PS 148WB	1
PA01322	Hardware Kit	1

Visual Representation of Van Wall Panels

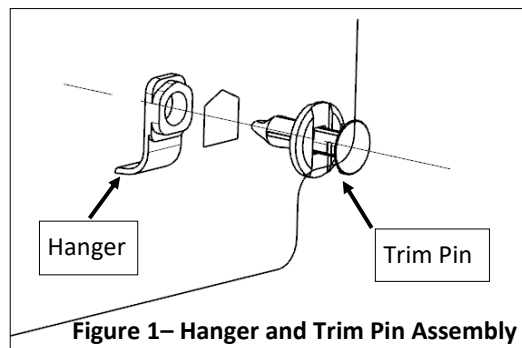
NOTE: Images shown are to provide the general shape of the panels.



INSTRUCTIONS FOR INSTALLATION OF LOWER FRONT WALL PANEL

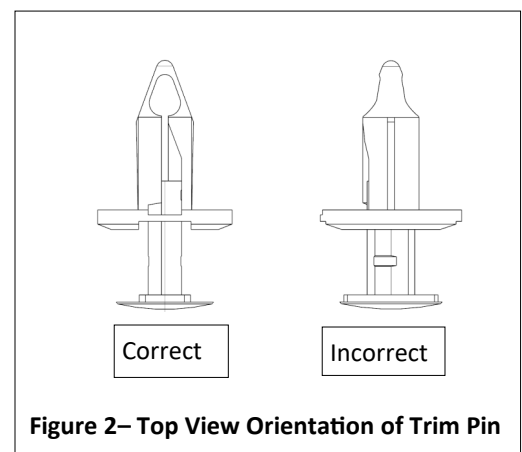
1. Install lower front wall panel-FVT006

- a. Fasten hangers on the bottom six (6) hanger slots to the smooth side of the panel using the trim pin (Figure 1). **Note:** Put recesses of trim pin in vertical position and tabs of pin in horizontal position. Other orientations may make the panel more difficult to install. Proper orientation shown in Figure 2.

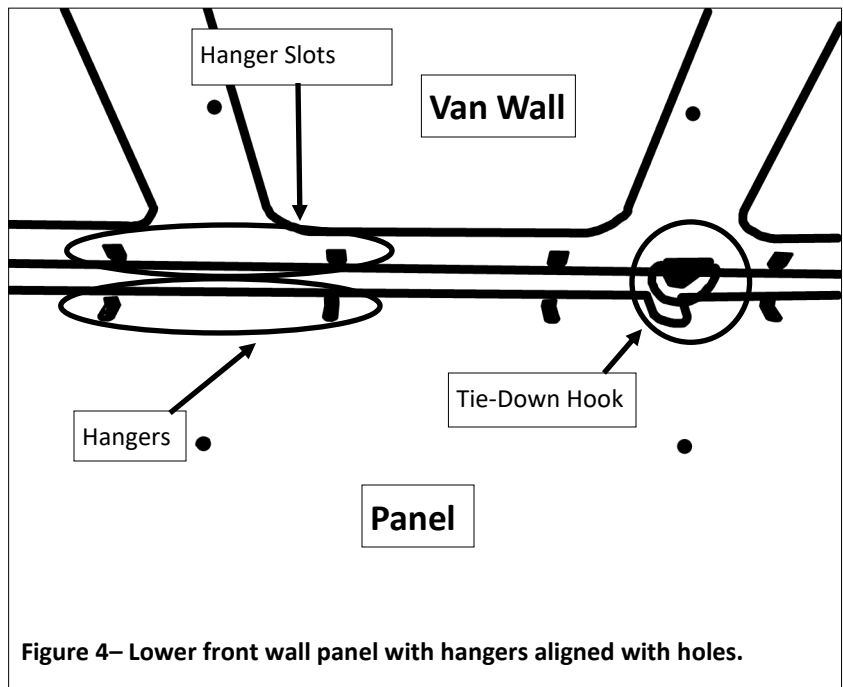
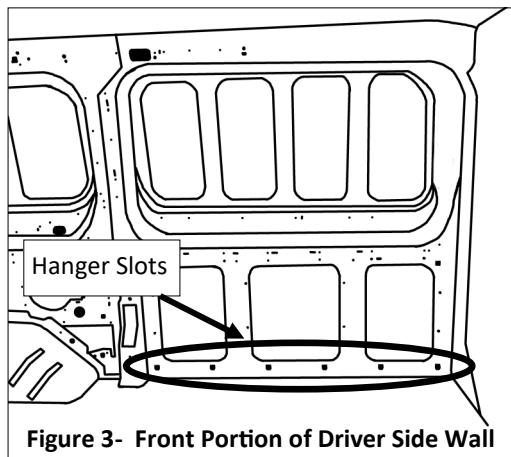


- b. Position panel into lower front portion of driver side wall (Figures 3 and 4).

- Slide panel over tie-down hook, angled towards you.
- Align hangers with the bottom six slots of van wall and rest shelf of the hangers on bottom edge of slots.
- Push panel to a vertical position against the wall.
- Press bottom of panel toward van wall so that the hangers engage the slots.
- Push panel downward so the hangers hook onto the sheet metal.



- c. Insert trim pins into panel holes starting with the two holes in the top left corner of the panel.



INSTRUCTIONS FOR INSTALLATION OF UPPER FRONT WALL PANEL

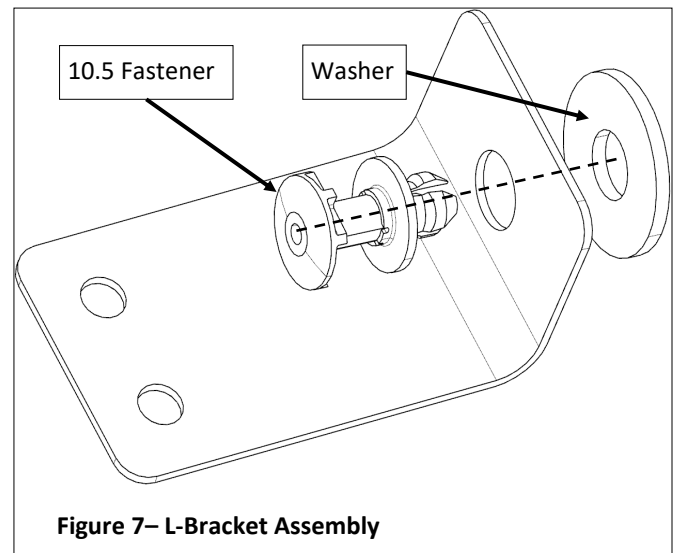
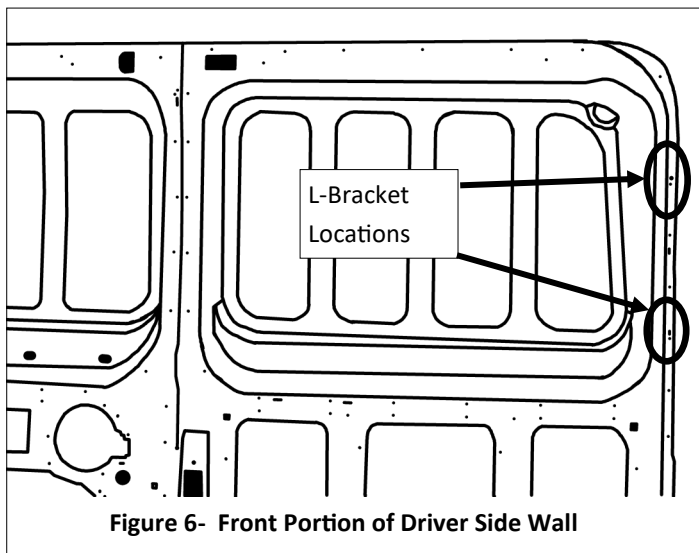
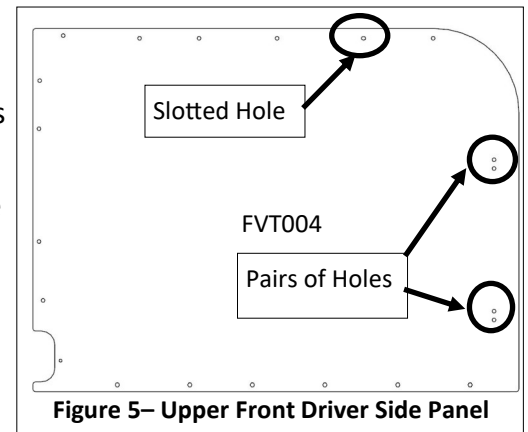
2. Install upper front wall panel-FVT004

a. Attach the L-brackets to the panel.

- i. Align the two holes on the L-brackets with the pair of holes on the right side of the panel (Figure 5). Make sure that the L-brackets are on the smooth side of the panel and the ends point to inside the van.
- ii. Use the trim pins to fasten the L-brackets into place.

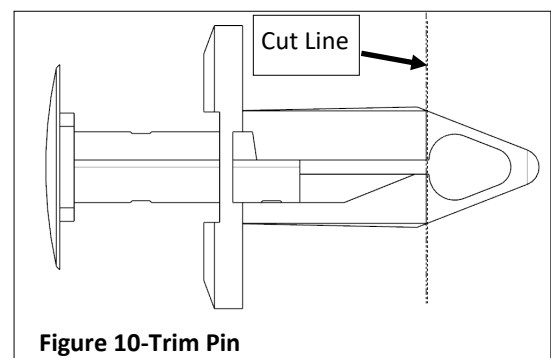
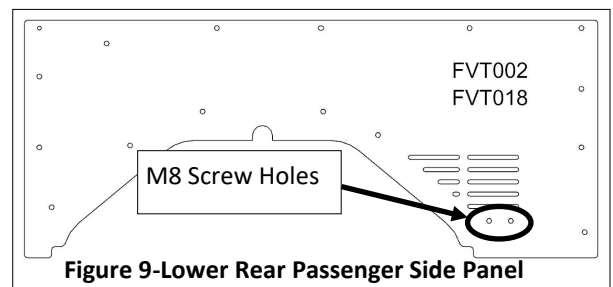
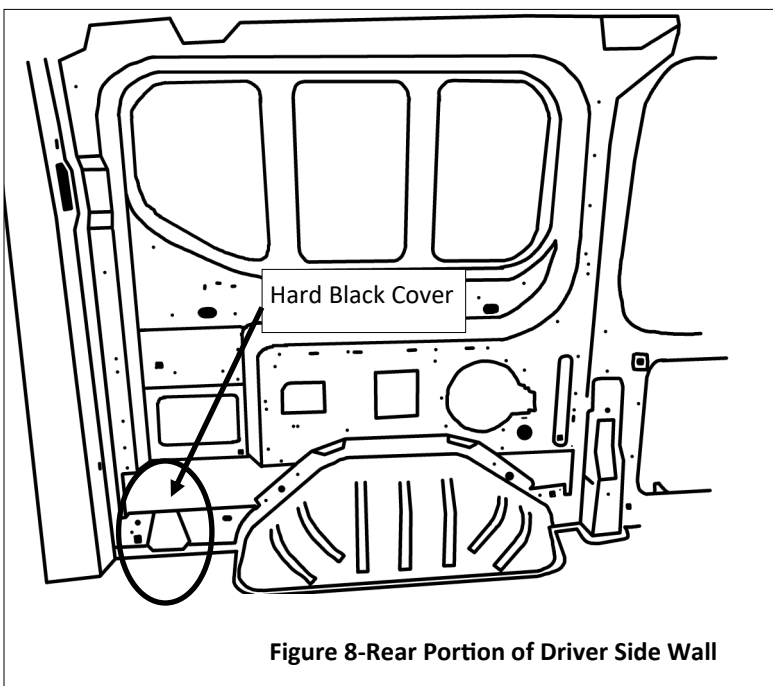
b. Position panel into upper front portion of driver side wall.

- i. Push trim pins into the bottom left hole and the slotted hole on the top right (Figure 5).
- ii. Line up the big holes on the L-bracket with the smaller holes on the front edge of the van wall (Figure 6). Push the 10.5mm fastener through the L-bracket and the washer to hole then into place (Figure 7).
- iii. Push trim pins into the remaining holes.



INSTRUCTIONS FOR INSTALLATION OF REAR WALL PANELS

1. Install lower rear panel on the driver side-FVT024/FVT009
 - a. Remove hard black plastic cover from the bottom left corner. The plug will not be replaced after the panel is installed, see Figure 8.
 - b. Position panel into lower rear portion on the driver side wall and push trim pins into the panel holes starting with the top right most hole.
2. Install lower rear panel on the passenger side-FVT002/FVT018
 - a. Remove hard black plastic cover from the bottom right corner. The plug will not be replaced after the panel is installed.
 - b. Position panel into lower rear portion on the passenger side wall and push trim pin into the top left most hole.
 - c. Screw M8 screws in the two (2) holes below the grated opening on the panel (Figure 9).
 - d. Push trim pins into the remaining holes.
3. Install upper rear panels-FVT008 and FVT020/FVT010 and FVT016
 - a. Position panel FVT020/FVT016 into upper rear portion on the passenger side wall and push trim pins into panel holes starting with the bottom hole closest to the front of the van.
 - b. Repeat for the upper rear panel FVT008/FVT010 on the driver side. **Note:** The trim pin for the bottom right hole for panel FVT010 may not push all the way in. If so, cut the cone of the trim pin. Do not cut past the cone (Figure 10).



INSTRUCTIONS FOR INSTALLATION OF UPPER WALL PANELS

1. Install upper front panel on the passenger side-FVT152/FVT156
 - a. Position panel FVT152/FVT156 above the door and push trim pins into hole 1 then 2 (Figure 11).
 - b. Apply promoter on area of sheet metal and wall panel indicated by the tape location in Figure 11 and let dry, around 5 minutes.
 - c. Place tape in area of sheet metal that promoter was applied. Make sure tape is not visible from side of panel. Peel red paper and press wall panel against tape. Apply pressure for 1 minute.
 - d. Push trim pin into hole 3.
2. Install upper rear panel on the passenger side– FVT151/FVT155
 - a. Position panel FVT151/FVT155 above the wall panel on the passenger side and push trim pins into panel holes 1 then hole 2 then hole 3.
 - b. Apply promoter on area of sheet metal and wall panel indicated by the tape location in Figure 11 and let dry, around 5 minutes.
 - c. Place tape in area of sheet metal that promoter was applied. Make sure tape is not visible from side of panel. Peel red paper and press wall panel against tape. Apply pressure for 1 minute.
 - d. Push trim pin into notch 4.

