

FORD TRANSIT VAN PANELS (2015+) 130"/148" WHEEL BASE LOW ROOF INSTALLATION INSTRUCTIONS

RECOMMENDED TOOLS

Phillips #4 screwdriver

Phillips #3 screwdriver

Knife or scissors (optional)

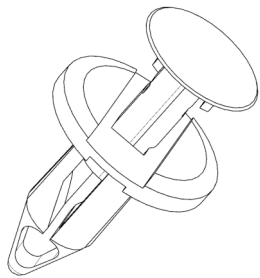
BEFORE BEGINNING THE INSTALLATION

1. Refer to the appropriate table on **Page 2** and check to make sure all of the listed items were provided in the box. **NOTE:** The label on the outside of the box will correspond with one of the table headings.
2. Gather the recommended tools listed above.

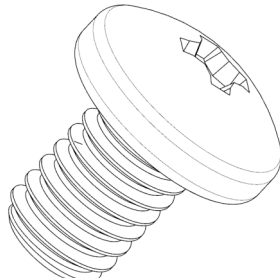
NOTES:

- Install WALL panels where textured side is visible.
- Install panels at room temperature (60°F-80°F).
- If wall panels conflict with other van accessories, some modifications may be required.
- When assembling with VanGuard floor panels and wheel well covers, the floor panels should be installed first, followed by the wheel well covers over the floor panels, then the wall panels over the floor panels and wheel well covers.

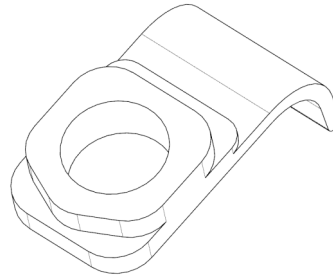
FASTENERS PROVIDED IN KIT



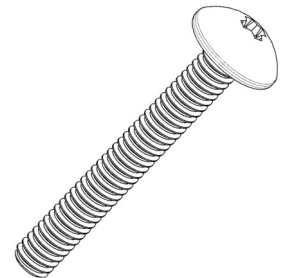
380442—TRIM PIN,
GRAY, 8MM



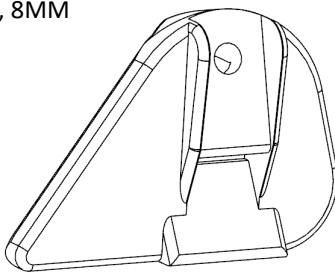
570466—M8X12 SCREW



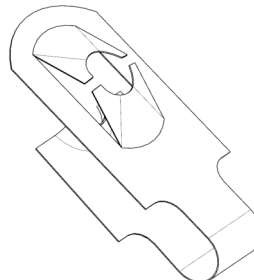
630159—HANGER



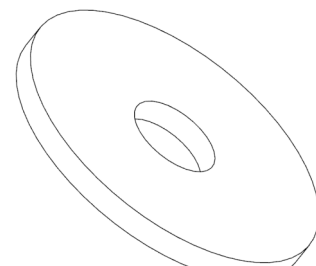
380249—1/4-14x 1 1/2 SCREW



PA0NUT—SWINGNUT



380020—U TYPE SPEED NUT



380248—FENDER WASHER

BILL OF MATERIALS FOR FORD TRANSIT VAN PANEL KITS

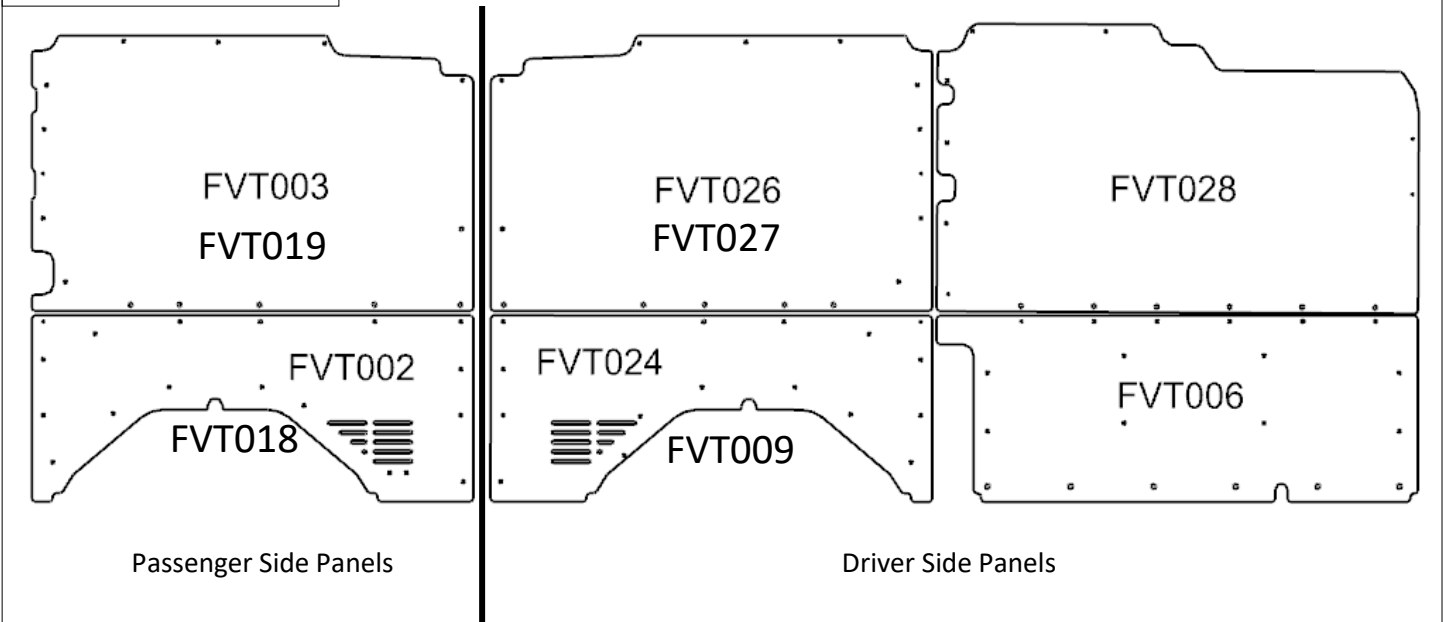
FVT140A - 130" Wheelbase Low Roof		
Part #	Description	QTY
FVT002	LR/MR Lower Rear PS 130WB	1
FVT003	LR Upper Rear PS 130WB	1
FVT006	LR/MR/HR/EL Lower Front DS 130/148WB	1
FVT024	LR/MR Lower Rear DS 130WB	1
FVT026	LR Upper Rear DS 130WB	1
FVT028	LR Upper Front DS 130/148WB	1
PA01321	130/148WB LR Kit	1

PA01321 - 130/148WB LR Kit		
Part #	Description	QTY
380442	Trim Pin, Gray, 8mm	107
630159	Hanger	6
570466	M8X12 Screw	2
PA0NUT	Swingnut	2
380020	U Type Speed Nut	2
380248	Fender Washer	2
380249	1/4-14x1 1/2 Screw	2

FVT142A - 148" Wheelbase Low Roof		
Part #	Description	QTY
FVT006	LR/MR/HR/EL Lower Front DS 130/148WB	1
FVT009	LR/MR/HR/EL Lower Rear DS 148WB	1
FVT018	LR/MR/HR/EL Lower Rear PS 148WB	1
FVT019	LR Upper Rear PS 148WB	1
FVT027	LR Upper Rear DS 148WB	1
FVT028	LR Upper Front DS 130/148WB	1
PA01321	130/148WB LR Kit	1

Visual Representation of Van Wall Panels

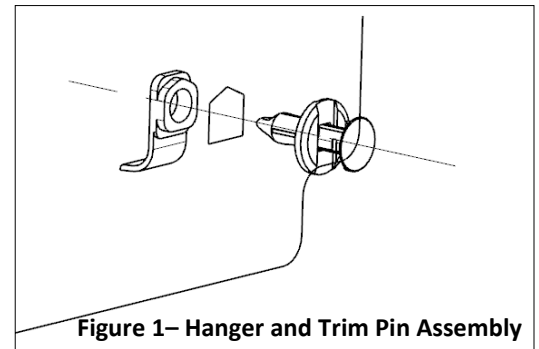
NOTE: Images shown are to provide the general shape of the panels.



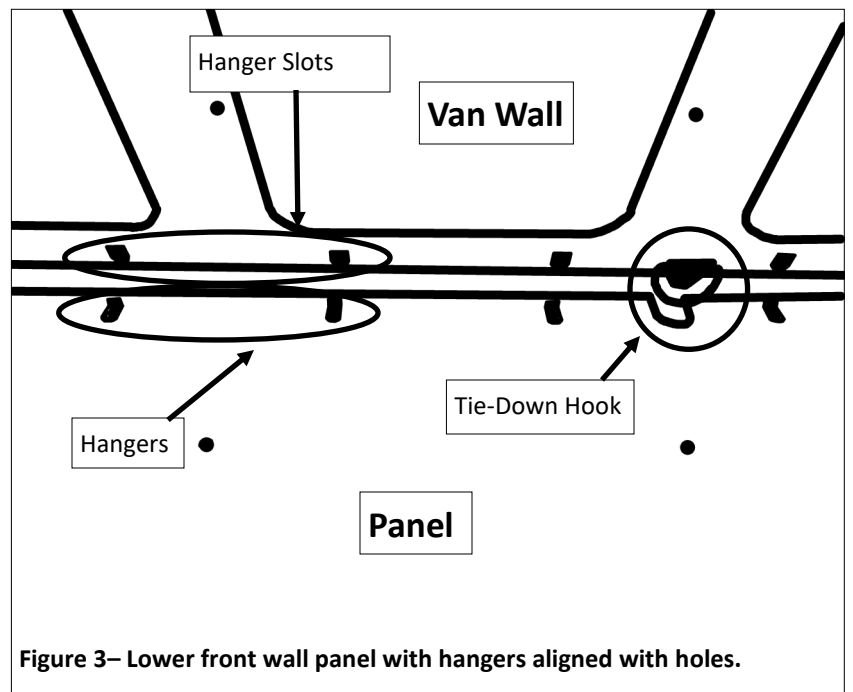
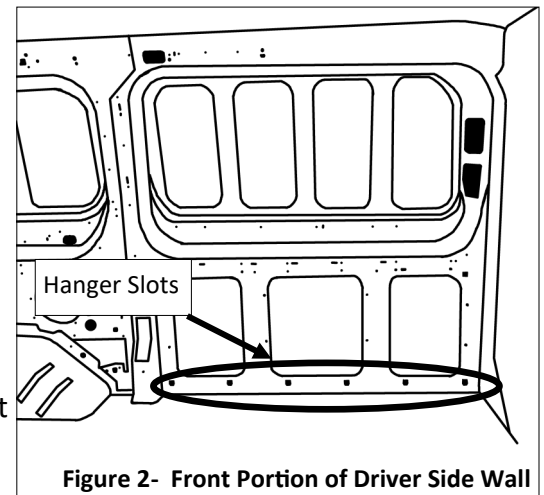
INSTRUCTIONS FOR INSTALLATION OF LOWER FRONT WALL PANEL

1. Install lower front wall panel-FVT006

- a. Fasten hangers on the bottom six (6) hanger slots to the smooth side of the panel using the trim pin (Figure 1). **Note:** Put recesses of trim pin in vertical position and tabs of pin in horizontal position. Other orientations may make the panel more difficult to install. Proper orientation shown in Figure 1.



- b. Position panel into lower front portion of driver side wall (Figures 2 and 3).
 - i. Slide panel over tie-down hook, angled towards you.
 - ii. Align hangers with the bottom six slots of van wall and rest shelf of the hangers on bottom edge of slots.
 - iii. Push panel to a vertical position against the wall.
 - iv. Press bottom of panel toward van wall so that the hangers engage the slots.
 - v. Push panel downward so the hangers hook onto the sheet metal.
- c. Insert trim pins into panel holes starting with the two holes in the top left corner of the panel.

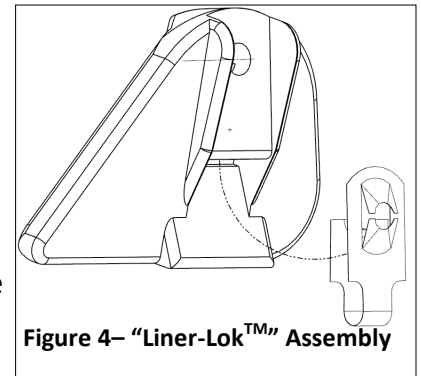


INSTRUCTIONS FOR INSTALLATION OF UPPER FRONT WALL PANEL

2. Install upper front wall panel-FVT028

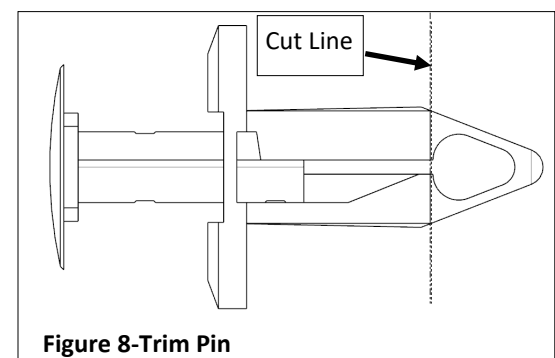
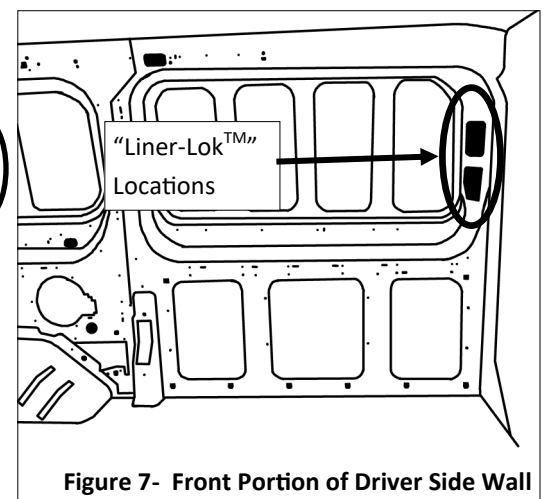
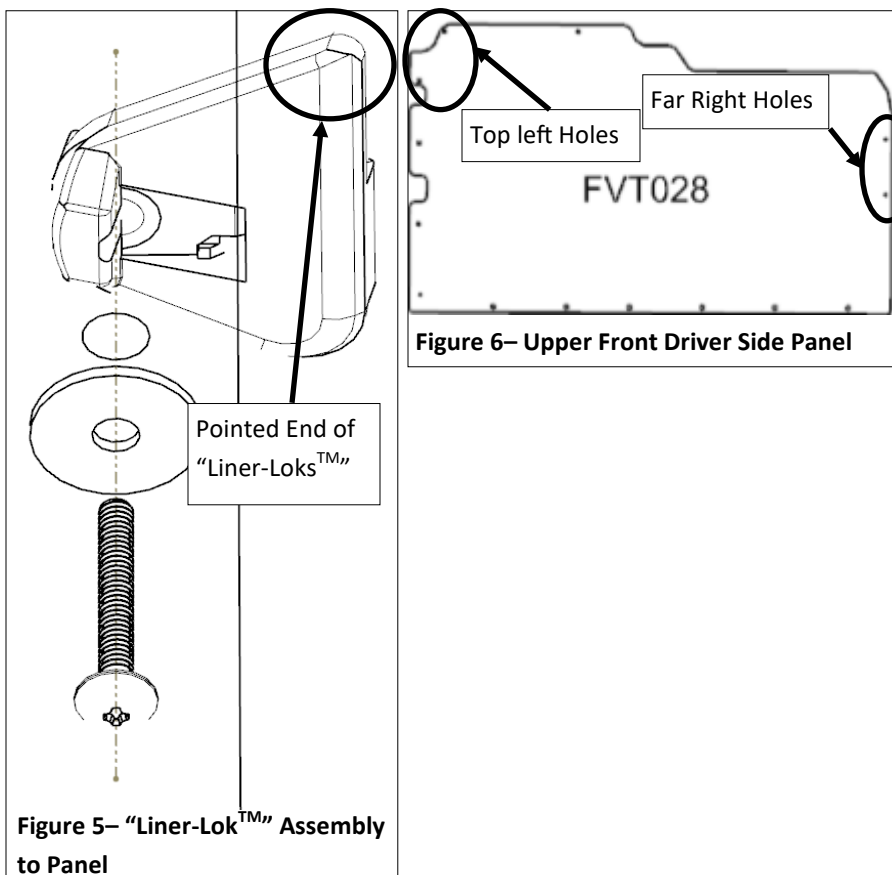
a. Assemble the two “Liner-Lok™” fasteners to the panel.

- Slide the metal clip onto the plastic “Liner-Lok™” (Figure 4).
- Insert screws through washers on textured side of panel and then through each of the two holes on the far right of the panel (Figures 5 and 6).
- Insert screw through metal clip of fastener with the fastener on the smooth side of the panel. Thread two turns.



b. Position panel into upper front portion of driver side wall.

- Make sure the “Liner-Lok™” fasteners are behind the sheet metal in the “Liner-Lok™” locations depicted in figure 7.
- Push trim pins into panel holes starting with the top and bottom most holes on the left side of panel. **Note:** The trim pins for the top left holes may not push all the way in. If so, cut the cone of the trim pin. Do not cut past the cone (Figures 6 and 8).
- Tighten the “Liner-Loks™” all the way.



INSTRUCTIONS FOR INSTALLATION OF REAR WALL PANELS

1. Install lower rear panel on the driver side-FVT024/FVT009
 - a. Remove hard black plastic cover from the bottom left corner, see Figure 9.
 - b. Position panel into lower rear portion on the driver side wall and push trim pins into the panel holes starting with the top right most hole.
2. Install lower rear panel on the passenger side-FVT002/FVT018
 - a. Remove hard black plastic cover from the bottom right corner.
 - b. Position panel into lower rear portion on the passenger side wall and push trim pin into the top left most hole.
 - c. Screw M8 screws in the two (2) holes below the grated opening on the panel (Figure 10).
 - d. Push trim pins into the remaining holes.
3. Install upper rear panels-FVT003 and FVT026/FVT019 and FVT027
 - a. Position panel FVT026 into upper rear portion on the driver side wall and push trim pins into panel holes starting with the bottom hole closest to the front of the van.
 - b. Repeat for the upper rear panel FVT003 on the passenger side.

